

LIGIPÄÄSETAVUSE HINDAMINE



Villu Urban
TLIÜ

TLIÜ ligipääsetavuse alased tööd

- TLIÜ – projektide kooskõlastus ja uusehitiste vastuvõtt, koostöö TLV-ga, 2010-2014
projektide ja hoonete invanõustamine ~300 obj
- Ligipääsuauditid ühiskondlikele hoonetele, tehtud ~100 erinevat tööd
- Kõnniteede liikumistakistuste kaardistamine
- TLIÜ ja TPIK ettepanekul algatas TLV ligipääsetavuse tegevuskava 2015-2020 koostamise, valmib dets 2014

Ehitusmäärus nr 14, 2002



ELEKTROONILINE RIIGI TEATAJA – eRT

Otsing | Kronoloogia | Süstemaatiline jaotus

Akt

Väljaandja : Majandus- ja kommunikatsiooniministri 28. märtsi 2002. a määrus

Akti või dokumendi liik : määrus

Teksti liik : algtekst, teatav

Redaktsiooni jõustumise kp. : 01.01.2003

Redaktsiooni kehtivuse lõpp : Hetkel kehtiv

Avaldamismärge : RTL, 24.12.2002

Nõuded liikumis-, nägemis- ja kuulmispuudega inimeste liikumisele

Majandus- ja kommunikatsiooniministri 28. märtsi 2002. a määrus

Määrus kehtestatakse «Ehitusseaduse» (RT I 2002, 47, 297) § 3 lõike 10 alusel

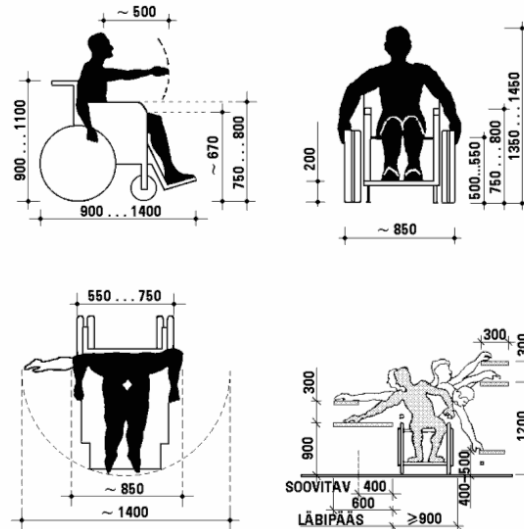
1. peatükk
ÜLDSÄTTED

§ 1. Reguleerimisala

Käesolev määrus kehtestab nõuded liikumis-, nägemis- ja kuulmispuudega inimeste liikumisele ja tagada neile ehituslike takistusteta liikumine avalikes kohtades ja üldkasutatavates ehitistes.

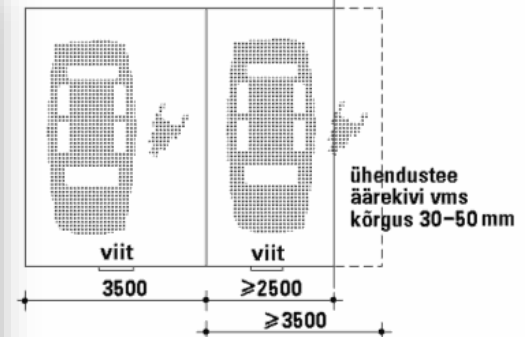
§ 2. Üldkasutatav ehitis

Gabariidid, pinnavajadus

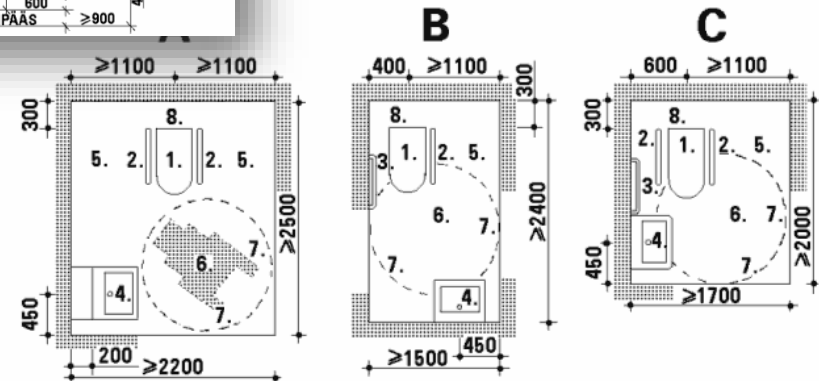


Liikumisvaeguri auto parkimiskoht

Näide 1 Näide 2



Invatualettruumid



Ligipääsetavuse auditid

- TTÜ 35, TÜ 95+16, EMÜ 11, TLÜ 7 hoonet
- Turismiobjektid, muuseumid, hotellid jms

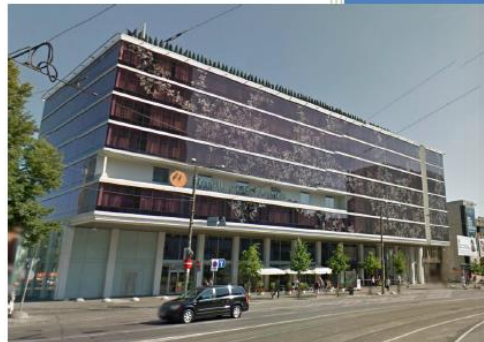
2013

**Kadrioru
kunstimuuseum**
ligipääsetavuse
audit



Eesti Liikumispuudega Inimeste Liit

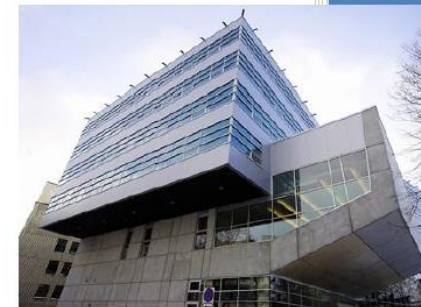
Nordic Hotel Forum
ligipääsetavuse
audit



Eesti Liikumispuudega Inimeste Liit

2013

Mare õppehoone
ligipääsetavuse
audit



Eesti Liikumispuudega Inimeste Liit

Ligipääsetavuse aruanne



6. II-korruse invatualett

- 6.1. II-korruse invatualett asub fuažeest minnes vasakus tiivas. Puuduvad täpsustavad suunaviidad invatualettideni.
- 6.2. WC-põrand on tõstetud ning sissepääsul on kaldega püütud sissesõitu madaldada, kuid siiski see on järsk, kõrguste vahe on 5,0 cm (norm 2,0 cm). Sissesõitu tuleks madaldada järgmise kivini, nii saab pealesõitu muuta sujuvamaks.
- 6.3. WC-paberi hoidja seinal on liiga kaugel. Käetugedele tuleb lisada paberihoidja raam, need on jäetud paigutamata.
- 6.4. Invatualeti ukse tähistus, laius, lukustus, lisakäepide, peegel, nagid, käsidušš, poti kõrgus vastavad nõuetele.



Eesti Liikumispuudega Inimeste Ühik

Invatualett I-korrus

www.liikumisvabadus.info/ee

Objekti andmed:	Norm	Mõõt	Ühik	Hinne	Märkus/soovitus
- vaba ruum wc sissepääsu ees	≥1,5X1,5m		m	3	
- ukse laius (min 900mm)	≥900	900	mm	3	
- lävepakki, künnis	≤20mm	20	mm	3	
- inva-wc tähistus uksele				3	
- ukse avamise kergus, soovitatav tõmbejõud 1kg (1N)			kg	3	
- ukse avanemine väljapoole				3	
- ukse lukustus seestpoolt				3	
- ukse kinnitõmbe lisakäepide				3	
- wc min mõõdud	2,2x2,5m		m	2	kitsas, ei pääse el.ratastooriga sisse liikuma
- ratastooli pöörerdaradiused	≥1400mm		mm	2	poti segab ringipööramist
- klosetipoti kõrgus prillilaua pealspinnani	500-520mm	500	mm	3	
- käsiduši kasutamine poti olles				3	
- käsitugede vahe 600mm, kõrgus 800mm				3	
- paberirulli käetoe küljes või kaugus potist	≤300mm	500	mm	2	rull on käeulatusest väljas
- kraanikausi mõõdud	≥550x400mm		mm	3	
- kraanikausi kõrgus põrandast	ca800mm	800	mm	3	
- peegli alumine serv, kätekuivati jms kõrgus	≤900mm	900	mm	3	
- nagid (2-3x) klosetipoti kõrval seinal	ca1200mm	1200	mm	3	
- häiresignalsüsteem nupp			mm	3	
- wc valgustus				3	

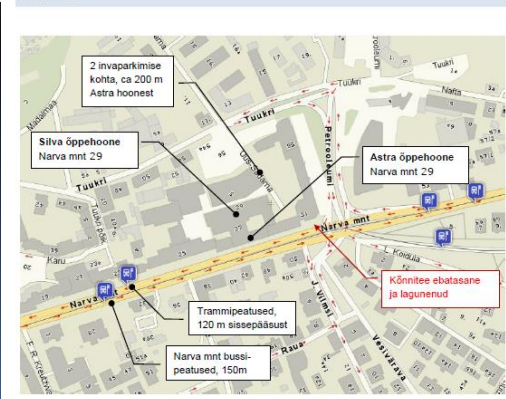
Märkused:

1. WC-s ratastooli pööramisruum väiksem kui 1,4 m ning poti paigutuse tõttu ei ole el.ratastooriga võimalik manööverdada.
2. Puuduvad viidad invatualeti asukohani.



Tallinna Liikumispuudega Inimeste Ühik

ASUKOHT



Hoone asukoht ja märgatavus



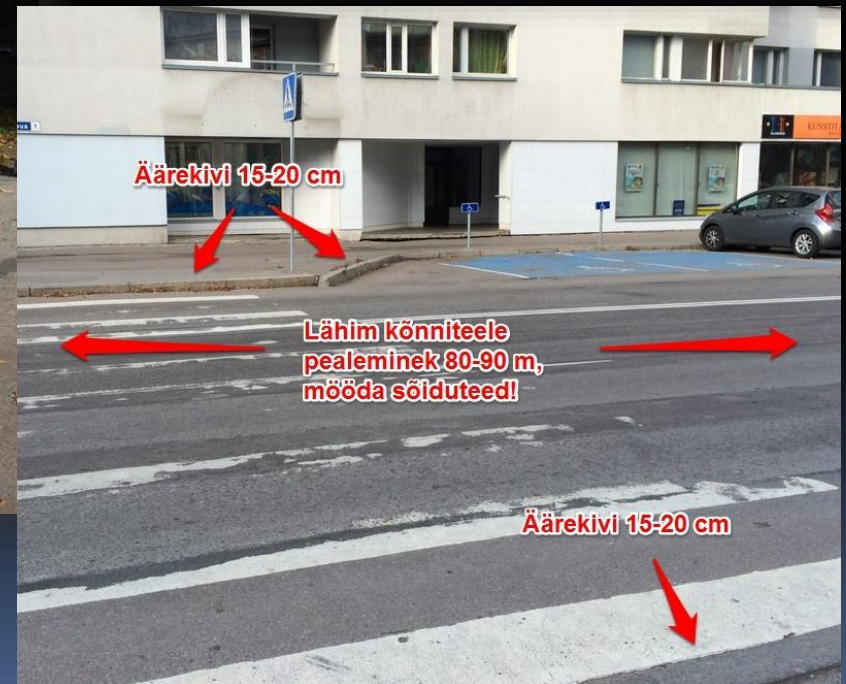
Ligipääsuteed



Kõrged 10-15 cm äärekviid, madaldatud pealeminekud puuduvad



Invaparkimine



Sissepääsud



Invatualetid



Siseolud

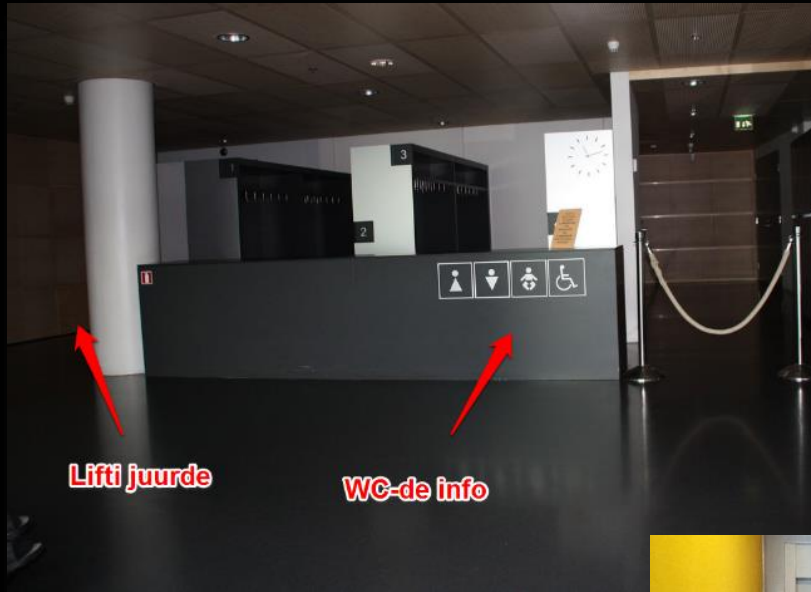


Pööramisruumi on väga vähe

Käsi puu puudu

Kalle on väga järsk 13%

Liftid



Lifti juurde

WC-de info



Invalift museumisse
Elevator for disabled access



Asutuste kodulehed

MODERNA MUSEET

STOCKHOLM MALMO ABOUT THE COLLECTION The Friends of Moderna Museet Support the museum Webshop



Visit Exhibitions Family School Programme Conferences

Stadsbibliotek / säs / Access

Access

- Restaurant, café and express bar in the museum.
- General parking outside the entrance facing the water. Parking for the disabled outside the main entrance and the entrance facing the water.
- All doors open automatically.
- Disabled toilets. Wheelchairs available on loan, no treaholds within the museum building.
- Baby change room. Nnams available on loan.
- Lifts for visitors.
- The Auditorium and Cinema have induction loops.
- Lockers. Unattended cloakroom.
- Guided tours also for the visually impaired, using tactile aids. Guided tours with sign language and for the cognitively impaired.
- Moderna Museet's website is adapted to the WAI guidelines.*

* In order to improve internet accessibility for people with disabilities, international guidelines have been formulated by the WAI (Web Accessibility Initiative), a committee within the W3C (World Wide Web Consortium). The EU member nations have agreed that public websites should comply with these guidelines.

STOCKHOLM Hours Prices
 Entrance January 10-20 120/100 SEK
 *+46 8 3302 3388 Webshop: +46 8 3302 3388 Free admission for those 22 and under
 Friday 10-20
 Saturday 10-18
 Monday closed

Support the museum
 © 2014 Moderna Museet


Contact us Press Friends of Vasa Banquet & conference Choose language

VASA MUSEET

OPENING HOURS TODAY
10.00-17.00

VISIT THE SHIP EXHIBITIONS PRESERVATION & RESEARCH BLOGS

ACCESSIBILITY



GUIDED TOURS
 Join a guided tour around the ship and learn about Vasa's history.

GROUP VISITS
 Guided tours for groups and school classes.

GETTING HERE
 The Vasa Museum is situated on the island of Djurgården in Stockholm.

MP3 GUIDE
 With our MP3 guide you can take a guided tour in the museum on your own.

Print Share Twitter Facebook

...gives the visually impaired a chance to experience through touch how contact the information desk.
 ...in Swedish and English, with suggestions for tours can be borrowed from an desk.
 ...table in the large auditorium during the film screenings.
 ...let showing 10 Blissymbols to explain the warship Vasa are
 ...to all floors
 ...fair accessible. Wheelchairs are available on request for use by number of staff for assistance.
 ...table outside the museum entrance (3 spaces).
 ...let for those with food allergies can be ordered in the Vasa
 ...table for classes / groups with disabilities. Contact our Booking Office:
 Fax +46 8 519 548 88. E-mail: bokningar.vasa@modm.se

ABOUT

- Friends of Vasa
- Banquet & conference
- Museum history
- Environmental work

PROFESSIONALS

- Travel Trade
- Press

NATIONAL BOARD OF ANTIQUITIES

Personal Directory Contact information Feedback

Homepage / National Museum of Finland / Accessibility

National Museum of Finland

Enjoy fees, contact information, opening times

Exhibitions

Guided tours

Events

Learning

Cafeteria

Museum Shop

Media Service

History of museum and building

Conservation Laboratory

Central Stairs

Spaces for hire

AVO

Accessibility

National Museum accessibility

Ticket counter is in the museum's central hall with access by lift from the ground floor
 Ticket sales: tel. +358 (0)43 128 6429, Tue-Sun 11-15.

Opening hours
 Tue-Sun 11 a.m. - 6 p.m.
 Monday: closed

Entrance fees 2013
 Adults € 8 base
 Discounts € 5 euro (students, pensioners over 65, concepts and groups of over 19 members), under 18 years olds and assistance free of charge.

The accessible entrance is at street level on Mannikkomäntie under the main staircase. There is a phone at the door for contacting museum staff who will open the door. The accessible toilet is on the ground floor near the entrance and the public lift leads to all floors.

Visitors may borrow wheelchairs and Rollator, walking aids from the cloakroom. There is a wheelchair lift on the first floor between the permanent exhibition and the medieval church room in room 116. There is room for wheelchairs at the back of the auditorium.

Guide and assistance dogs are welcome.

The self-service cloakroom is free of charge and is located on the first floor next to the museum's main entrance. There are coin-operated (50 cent) lockers next to the cloakroom and on the ground floor.

The lift connecting the floors of the building is next to the central hall and ticket sales counter. The lift has Braille exhibition area has a lift for wheelchairs and nearest ramped between the permanent exhibition and the medieval church room in room 100.

An induction loop system is installed at the Ticket Counter, in the Information Centre and in the Auditorium.

Amplified headphones are available for guided tours. Please enquire at the guide booking.

Magnifying glasses and torches can be borrowed from the ticket counter.

Guided tours and workshops can be customized for special groups of visitors. Guided tours can be ordered in Finnish, Swedish, English, German, French and Russian. For more information please contact guide bookings: tel. +358 (0)8 4650 8652, Tue-Fri 9 a.m.-12 noon. Bookings one week in advance. Over 30 or more persons groups, 2 weeks in advance.

The cafeteria is on the ground floor of the museum. The accessible entrance is at street level on Mannikkomäntie under the main staircase. Tel. +358 (0)43 1537 679, Tue-Sun 11 a.m. - 5 p.m.

The Museum Shop is on the first floor next to the entrance. Free entrance. Enquiries tel. +358 (0)43 128 6422, +358 (0)8 4650 9543, Tue-Sun 11 a.m. - 6 p.m.

Strollers can be borrowed from the cloakroom next to the central hall of the museum.

There are public toilets on the first floor near the central hall next to ticket sales and on the ground floor next to the auditorium.

Accessible toilet is on the ground floor.

The childcare room is on the ground floor. The cafeteria has feeding chairs and a microwave for heating food for children. Strollers can be borrowed from the cloakroom next to the central hall of the museum.

Symbolic: Finnish National Gallery

Täna!

MTÜ TLIÜ

Endla 59-110, Tallinn

www.tliy.ee

tliy@tliy.ee

